



וועד הרבנים
הרב אשר עקשטיין שליט"א
דומ"ץ בקהל חסידי בעלזא
הרב יוסף אייזן שליט"א
רב דקהל בני תורה
הרב יצחק ביסטריצקי שליט"א
מרבני חסידי באיאן
הרב יצחק שטיין שליט"א
ראב"ד קארלסברג
הרב צבי היילפרין שליט"א
דומ"ץ עדת יראים וויזן - ב.פ.

נתיסד לתועלת הרבים, בהמלצת גדולי הרבנים שליט"א
A NOT-FOR-PROFIT ORGANIZATION TO PROMOTE PROPER FILTRATION
718-301-9032

ניסן תשע"א

SPRING UPDATE! Every spring, filters in NYC clog 4x faster, as engorged rivers carry dirt into the reservoirs.

— HELPFUL TIPS —

Try washing off and reusing the filter (the dirt cakes on the **surface** of the filter).
For the E-Z-Filter, loosen up the precut inserts to make them more fluffy, or use the loose filter fiber.
Or, peel off the soiled layer of the precut insert, and put back the rest.

APPROVED FAUCET MOUNTED FILTERS

EZ-FILTER; PUR; BRITA (NOT THE PITCHER FILTER - IT LETS THOUGH COPEPODS); WATERPICK

The EZ-Filter works best with the fiber inserts...the filter will go much longer before clogging.
The very first EZ-Filters had cup shaped screens... these often eventually rip, so check them.
For the past 5 years, the EZ-Filter has a flat (not cup shaped) screen.
This design is very reliable...the screens do not rip.

AN OLD STYLE EZFILTER (CUP-SHAPED SCREEN) WITH A RIPPED SCREEN



APPROVED UNDER-THE-SINK FILTERS

RECOMMENDATIONS ARE FOR FILTER **CARTRIDGES**. ANY BRAND OF HOUSING MAY BE USED.

GLATTWATER PREMIUM 5 MICRON: Economical and reliable. It has excellent life (15,000 gallons), and has endcaps that provide a reliable seal. Replace yearly, or earlier if water pressure drops. Cold water only. Avg retail: \$9 - \$12.

GLATTWATER ULTIMATE: GOOD FOR HOT WATER. A high quality product, made in the USA. 100% polypropylene with no glues or adhesives. Silicone rubber endcaps. May be left in place until water pressure drops. Avg retail: \$18 - \$21.

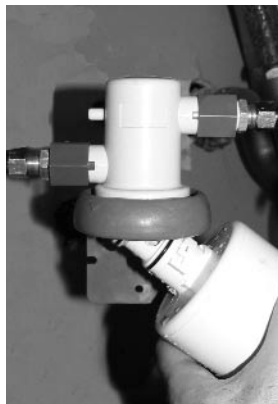
AQUAPURE MODEL NO. AP117: This is an excellent filter. It contains activated carbon to remove chlorine and improve taste. It may be left in place until water pressure drops. Avg retail: \$ 24.

BII (BOSHART) BRAND (10 MICRON OR LESS): provides basic protection. they **must be changed every 6 months...** they do not clog and eventually may let through bugs. Commercial use **must change these monthly**. Avg retail: \$ 7

APPROVED QUICK CHANGE FILTER

3M (AQUAPURE) AP-RC-101: An amazing product, designed by **3M** specially for NYC water to remove copepods. Filter is factory sealed in a quick-change housing, making it 100% reliable and foolproof. Will last a year or more (commercial sites: 6 months) before clogging. Change out takes seconds and requires no tools or expertise.

Replacement cartridges avg retail: \$38.
Entire unit avg retail: \$97.



CHANGEOUT OF THE NEW QUICK-CHANGE FILTER BY 3M.

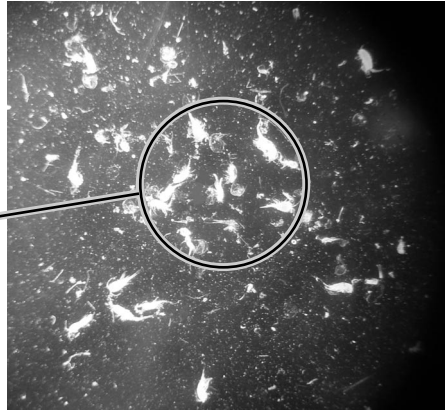
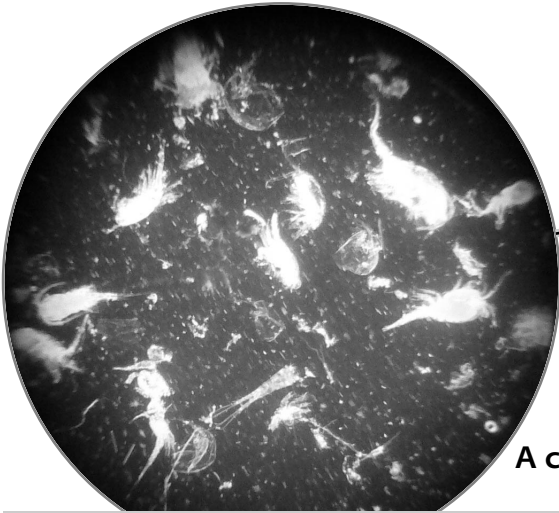
THE ENCAPSULATED FILTER EASILY TURNS 1/4 TURN AND COMES OUT.

AN INTERNAL VALVE TURNS OFF WATER FLOW AUTOMATICALLY WHEN FILTER IS REMOVED.

100% RELIABLE AT REMOVING COPEPODS, AND LASTS OVER 30,000 GALLONS BEFORE CLOGGING.

NOT RECOMMENDED UNDER-THE-SINK

AQUA-PLUMB (SOLD IN MANY HARDWARE STORES), GE (SOLD IN HOME DEPOT), AMERICAN PLUMBER, AMIAD, WHIRLPOOL FILTERS (SOLD IN LOWES HOME CENTERS)



A closeup view of the area circled in the picture above.

This is why it is important to use a recommended filter !

All these copepods were found while testing a NOT recommended filter (rated at 5 microns!)

APPROVED WATER-MAIN FILTERS

AQUAPURE AP903 / AP910R. Very reliable water main filter. Filter is factory sealed inside a one-time-use canister that fits into a specialized quick-change head. It is easy to change (no tools needed). However, it is expensive. Recommended for locations with low water usage (small families), or in conjunction with a backwash system.

FOR 20 INCH 'BIG BLUE' HOUSINGS:

AQUAPURE AP810-2 (5 MICRON) / AP811-2 (25 MICRON) — ONLY AS PER INSTRUCTIONS, BELOW:

- 1) Only versions that have **black** rubber washers on the plastic endcaps may be used. Do **not** use if there is a **yellow** rubber washer.
- 2) the filters are slightly too short, and are reliable **only** by adding an extra black washer to make up the height. Take a washer from a second filter, and place onto the bottom of the canister, before inserting the cartridge. (It's OK to reuse washers).

10 INCH 'BIG BLUE' HOUSINGS:

AP810 / AP811- AS PER INSTRUCTIONS (ABOVE).

BACKWASH SYSTEMS:

BACKWASH SYSTEMS CLEAN THEMSELVES OUT AND ARE MAINTENANCE FREE. HOWEVER, BY THEMSELVES THEY ARE NOT HALACHICALLY RELIABLE FOR REMOVING COPEPODS. AN APPROVED FILTER MUST BE INSTALLED AFTER THE BACKWASH FILTER. THE TWO TOGETHER ARE MAINTENANCE FREE AND RELIABLE.

A backwash filter system.

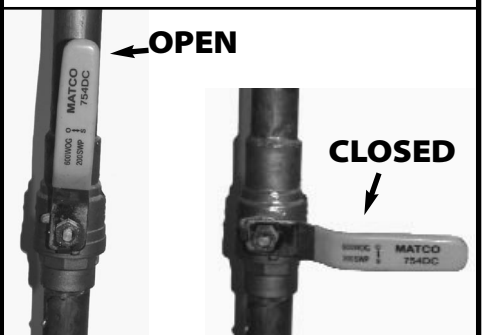
Note the smaller canister filter, to the right. This is needed to make the system halachically reliable.



BYPASS VALVES

WATER MAIN FILTERS USUALLY HAVE BYPASS VALVES. IF THE BYPASS VALVE OF THE WATER MAIN FILTER IS OPEN, THE FILTER IS WORTHLESS!

THE VALVE IS OPEN IF THE LEVER IS IN THE SAME DIRECTION AS THE PIPE



THE FOLLOWING TYPES ARE ALWAYS RELIABLE

HALF MICRON, CYST RATED FILTERS (THOSE THAT CLAIM TO REDUCE GIARDIA, CRYPTOSPORIDIUM, ETC.)

These are designed for health, and so are made reliably. There are many different types. They are expensive and clog quickly, so they can't go on the regular kitchen faucet. A separate glass-filler spout is needed.

FILTERS CONNECTED WITH 1/4" FLEXIBLE TUBING

This tubing is often used for icemakers, refrigerators, or water coolers/heaters. it is about the thickness of a pencil, and is either copper or plastic. Water flows through this tubing very slowly, and so all filters are reliable.